

SPECTEC
SDIO EXPERT



SPECTEC SDIO Bluetooth Dongle

BlueSoleil™ CE Software

Users Manual Version 1.0



Contents

1	Introduction	3
2	Features of BlueSoleil™ for WinCE 1.2.4	4
2.1	Connection Management.....	4
2.2	Device Management	4
2.3	Configuration Management	4
3	Installation BlueSoleil™ from InstallCD.....	5
3.1	System Requirements.....	5
3.2	Installation Procedure	5
3.2.1	Prepare to install	5
3.2.2	Start to install	5
4	BlueSoleil™ for WinCE Graphical User Interface	6
4.1	Start BlueSoleil™ for WinCE.....	6
4.2	Notify Menu	7
4.3	Operation Windows	9
4.4	Menu and Tool Bar	9
5	Configure Bluetooth Device.....	11
5.1	Configure Local Device Information	11
5.2	Configure the paired devices	12
5.3	Configure OPP Information	12
5.4	Configure the Bluetooth Transport Layer	13
6	Use the Bluetooth Profiles.....	14
6.1	Serial Port Profile.....	14
6.1.1	Set up a new SPP connection.....	14
6.1.2	Disconnect the SPP Application	18
6.1.3	Use the SPP Shortcut	19
6.2	Object Push Profile.....	19
6.2.1	Set up a new OPP Connection.....	19
6.2.2	Use the OPP Shortcut.....	23
7	Print file via the Bluetooth	23

1 Introduction

BlueSoleil™ for WinCE is a Windows CE-based Bluetooth wireless software suite. It is fully compliant with the latest Bluetooth SIG specifications.

BlueSoleil™ for WinCE V1.2.4 includes two Bluetooth application profiles. The following table indicates which of these profiles is available for client and server devices.

	Profile Description	Client	Server
SPP	Serial Port	Y	Y
OPP	Object Push	Y	Y

This guide describes how to install and use BlueSoleil™ for WinCE, including:

- ◆ How to navigate the main operation windows of BlueSoleil™ for WinCE.
- ◆ How to use the Menu and Tool Bar.
- ◆ How to configure a Bluetooth device.
- ◆ How to use the Bluetooth profiles.

2 Features of BlueSoleil™ for WinCE 1.2.4

2.1 Connection Management

The **connection** is an instance of a Bluetooth profile client-side implementation. Two types of connection are supported in this version of the BlueSoleil™ for WinCE software: Serial Port connection and Object Push connection. Connection management includes the following operations:

- ◆ Create New Connection
- ◆ Rename Connection
- ◆ Remove Connection
- ◆ Connect
- ◆ Disconnect
- ◆ Set as Default

2.2 Device Management

Device refers to a device that provides Bluetooth service(s), for example, Headset, Modem, Notebook, PC, Pocket PC (or PDA) and Handset. Device management includes the following operations:

- ◆ Search Devices
- ◆ Browse Services
- ◆ Search One Type Of Devices
- ◆ Stop Searching Devices

2.3 Configuration Management

Configuration management includes:

- ◆ Local Device Configuration
- ◆ Paired Devices Configuration
- ◆ Service Configuration

3 Installation BlueSoleil™ from InstallCD

3.1 System Requirements

- Windows CE 4.0/5.0
- SDIO Card slot

3.2 Installation Procedure

3.2.1 Prepare to install

- 1) Connect MC1000 and computer by USB cable.
- 2) Run Microsoft ActiveSync4.0 or high version to build partnership between MC1000 and computer.

3.2.2 Start to install

- 3) Put installCD into CD ROM device, installation program will be launched automatically (**You can also run Install.exe directly from the Install package folder which download via SPECTEC website**), a main menu windows will be pop-up in screen of desktop/laptop.

Press down **“BLUETOOTH CARD DRIVER”** to install **BlueSoleil™** on MC1000



4 BlueSoleil™ for WinCE Graphical User Interface

4.1 Start BlueSoleil™ for WinCE

Step 1: After installation, a BlueSoleil™ icon appears in the **Programs** of Windows CE system (Figure 4.1). Select Bluesoleil icon and press “**ENT**” button to start the BlueSoleil™ for WinCE application, If device is correct licensed ,the Bluetooth Manager windows will auto to show in screen at the time (Figure 4.1.1).

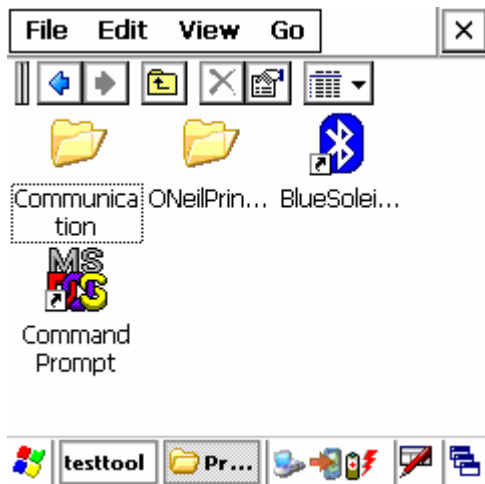


Figure 4.1 BlueSoleil™ Icon in Programs Menu



Figure 4.1.1 Main Window of Bluetooth Manager

Step 2: A Notify icon appears on the bottom right of the screen. (Figure 4.2)

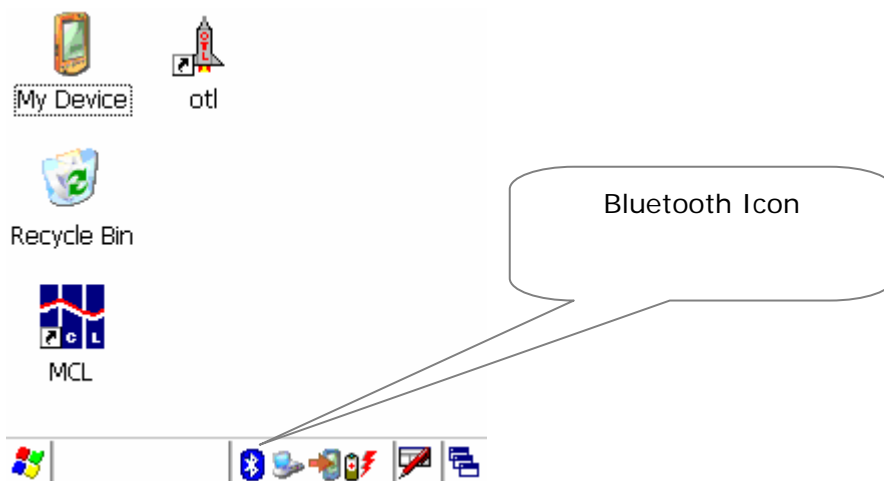


Figure 4.2 BlueSoleil™ for WinCE Notify Icon

4.2 Notify Menu

Press “**F**” then press “**JKL FS 5**” to open notify window. You can open it at any time after BlueSoleil started. Use “**ENT**” or “**ALT**” button to choose an item in notify window, then press “**ENT**” to confirm. (Figure 4.3)



Figure 4.3 Notify Menu

The following menu options are available:

- ◆ **Turn Bluetooth Off:** Turn off the Bluetooth electricity, And the application is running on the background of the system.
- ◆ **Bluetooth Manager:** Access the Bluetooth Manager windows. This is the main function of the application.
- ◆ **Exit:** Quit BlueSoleil™ for WinCE.
- ◆ **Back:** Go back to the upper

Step 3: If click “**Turn Bluetooth Off**” item . A Notify icon will appears on the bottom right of the screen. (Figure 4.4)

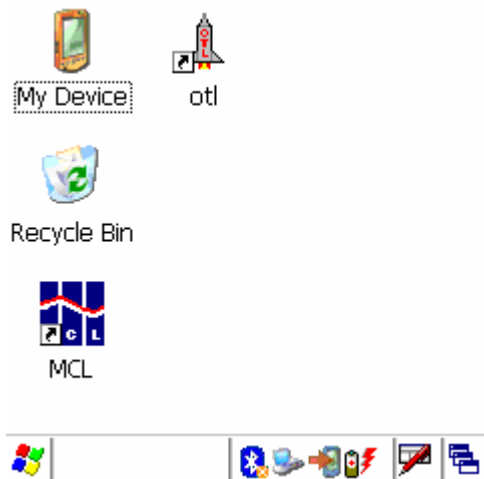


Figure 4.4 BlueSoleil™ for WinCE Notify Icon

Step 4: If you click the Notify icon or press “**F**” + “**JKL FS 5**”, a pop-up menu appears. (Figure 4.5)



Figure 4.5 Notify Menu








The following menu options are available:

- ◆ **Turn Bluetooth On:** Turn on the Bluetooth electricity, And the application is running on the foreground of the system.
- ◆ **Bluetooth Manager:** Access the Bluetooth Manager windows. This is the main function of the application.
- ◆ **Exit:** Quit BlueSoleil™ for WinCE.
- ◆ **Back:** Go back to the upper

4.3 Operation Windows

There are one operation windows in BlueSoleil™ for WinCE:

- ◆ **Bluetooth Manager** This is the main window of the application. It provides information of services. And direct you to communicate with the remote devices over Bluetooth.

To navigate these operation windows, click the **Bluetooth Manager** on the Notify Menu and enter the main window of the application. You can press “” or “” button to choose an item in the list, then press “” to confirm. You can also press “” + “” to hide all windows of bluesoleil, or press “” + “” twice to access title bar. (Figure 4.6)

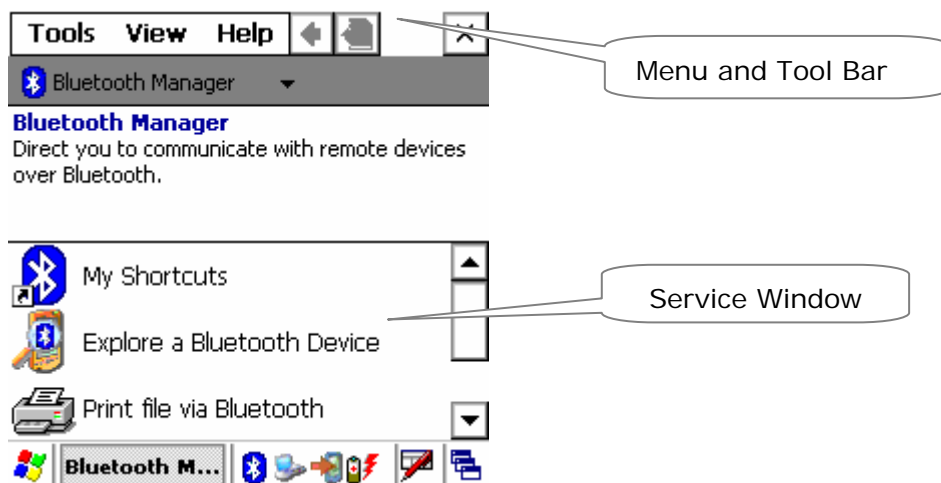




Figure 4.6 Main Window of Bluetooth Manager

4.4 Menu and Tool Bar

Press “” + “” twice, it will access title bar. There are three menus on the Menu and Tool Bar of BlueSoleil™ for WinCE.

The **Tools** menu contains the following items (Figure 4.7):

- ◆ **Active Connection** Manage the active connection to the remote devices. You can do operations on the connections.
- ◆ **Bluetooth Settings** Config the services property.

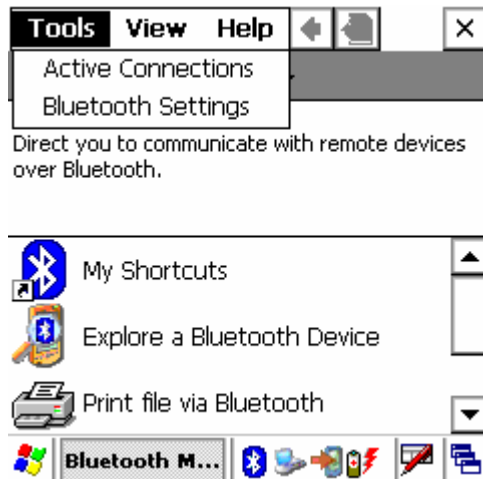


Figure 4.7 Items contained in the Tools menu

The **View** menu contains two items (Figure 4.8):

- ◆ **Icons:** Switch to Icon view.
- ◆ **Details:** Switch to List view.



Figure 4.8 Items contained in the View menu

The **Help** menu contains one item (Figure 4.9):

- ◆ **About:** Show software version.



Figure 4.9 Items contained in the Help menu

5 Configure Bluetooth Device

5.1 Configure Local Device Information

Click **Bluetooth settings** on the **Tools** menu. In the popup **Options** dialog, click **General** tab.

you can press “F” + “OK” button to select item you want. If you want to change a checkbox’s state, select it and then press “A” + “F10” button. (Figure 5.1)

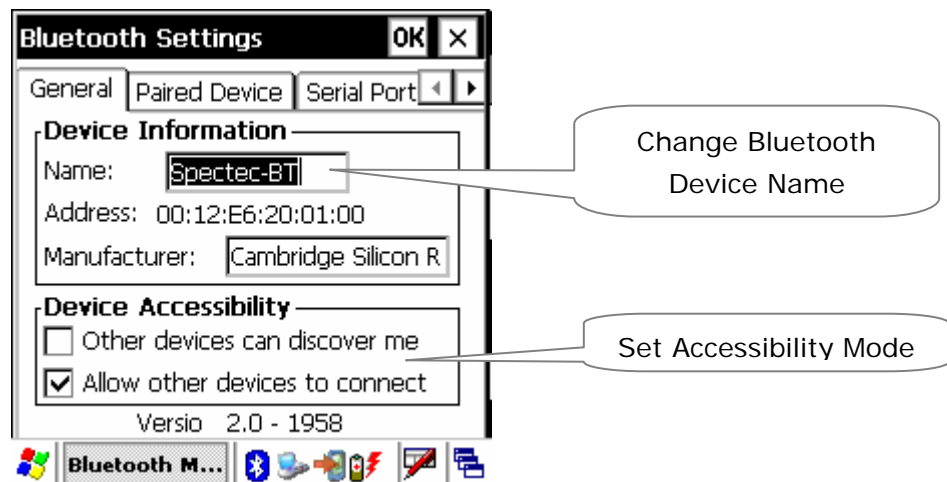


Figure 5.1 Local Device Configuration

In the **Configure Local Device** page, the following operations are available:

- ◆ Set the Bluetooth device name.
- ◆ Set whether allow other devices to discover my device.

- ◆ Set whether allow other devices to connect my device.

5.2 Configure the paired devices

Click **Bluetooth settings** on the **Tools** menu. In the popup **Options** dialog click **Paired Device** tab. (Figure 5.2)

Remove a paired device by selecting it and then click the **Remove Device** button.

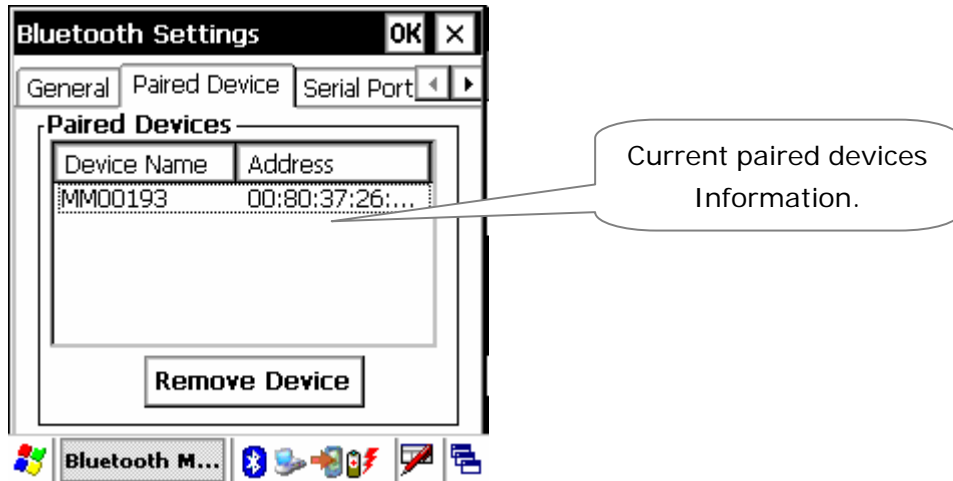


Figure 5.2 Paired Devices Configuration

5.3 Configure OPP Information

Click **Bluetooth settings** on the **Tools** menu. In the popup **Options** dialog click **Object Exchange** tab. (Figure 5.3)

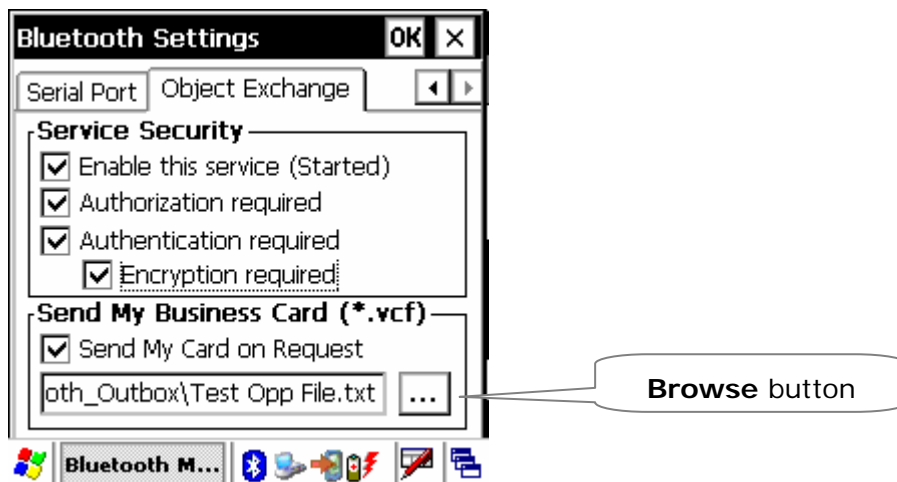


Figure 5.3 OPP Configuration

In the **Configure OPP** page, the following operations are available:

- ◆ Set Service Security:
- ◆ Set local OPP Server **Send My Card on Request**.
Tick the **Send My Card on Request** checkbox, the local OPP server will send the default business card when remote OPP client sends pulling request. Otherwise, the local OPP server will refuse the pulling request from the remote OPP client.
- ◆ Set **Default Business Card**.
Click the **Browse (...)** button. In the Window CE file view program, select a contact item and then select a file to set as a default file. (Figure 5.4)

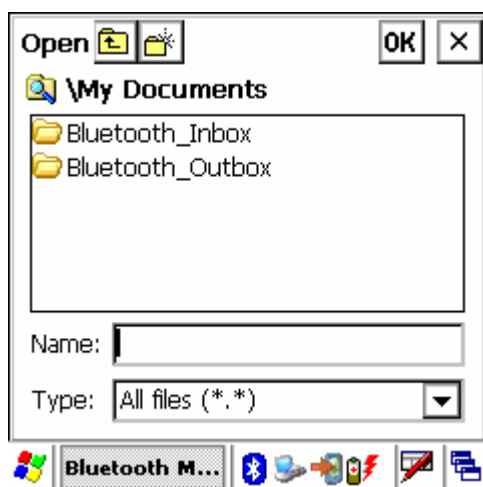


Figure 5.4 OPP Default Business Card Configurations

5.4 Configure the Bluetooth Transport Layer

Click Bluetooth settings on the Tools menu. In the popup Options dialog click Serial Port tab. (Figure 5.5)

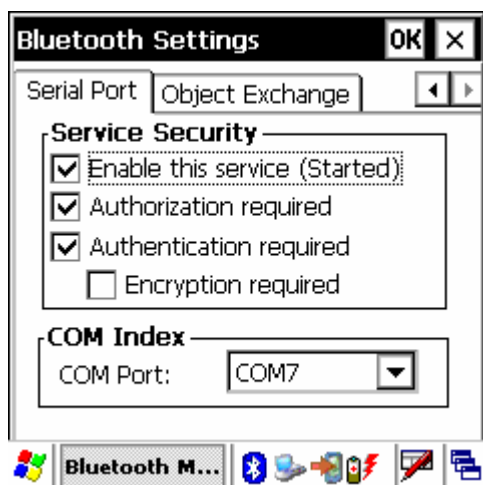


Figure 5.5 Bluetooth settings dialog

In the **Serial Port** page, the following operations are available:

- ◆ Set Service Security
- ◆ Select COM index (Figure 5.6)

System has three virtual UART ports: com7, com8, com9 .Anyone will be ok.

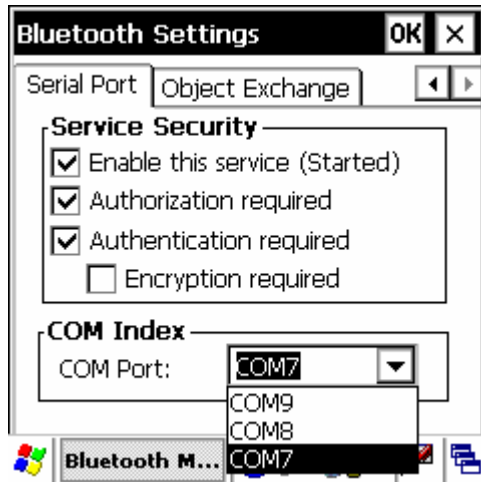


Figure 5.6 Selecting COM index

6 Use the Bluetooth Profiles

The following sections outline how to use the Bluetooth Profiles supported by BlueSoleil™ for WinCE version 1.2.4.

6.1 Serial Port Profile

The Serial Port Profile (SPP) application model can be seen as a client/ server structure. BlueSoleil™ for WinCE can act as both the SPP server and the client.

6.1.1 Set up a new SPP connection

BlueSoleil™ for WinCE as a SPP Client

Step 1: Browse devices.

In Device Explore window, you can press “**F**” + “***1**” to refresh/stop list view, or go back to previous window by press “**F**” + “**ABC 2**”. You can also Press “**F**” + “**GHI F4 4**” to hide every window of BlueSoleil. After you select an item, press “**ENT**”

Click the **Search Devices** button to search for the device nearby, click the device with which you want to establish the SPP connection.

Note: In the remote devices list, if the device with which you want to connect is not shown in the remote devices list, please check that whether the device is power on, the distance between your device and remote device is less than 10 meters and the Bluetooth program is running on the device, then click the **Search Devices** button to search for devices nearby again.

If the device still is not shown in the device list, please check that whether the device connect to other devices. If the connection with other device(s) exists, first disconnect the connections with other device(s), and then click the **Search Devices** button to search for devices nearby again.

If the device's name is "Unknown", please check that whether the device connect to other devices. If the connection with other device(s) exists, first disconnect the connections with other device(s), and then click the **Search Devices** button to search for devices nearby again. Occasionally, you cannot get the remote device's name though you have done searching for the device many times, you can ignore it, and go on the following steps to use SPP service. (Figure 6.1)

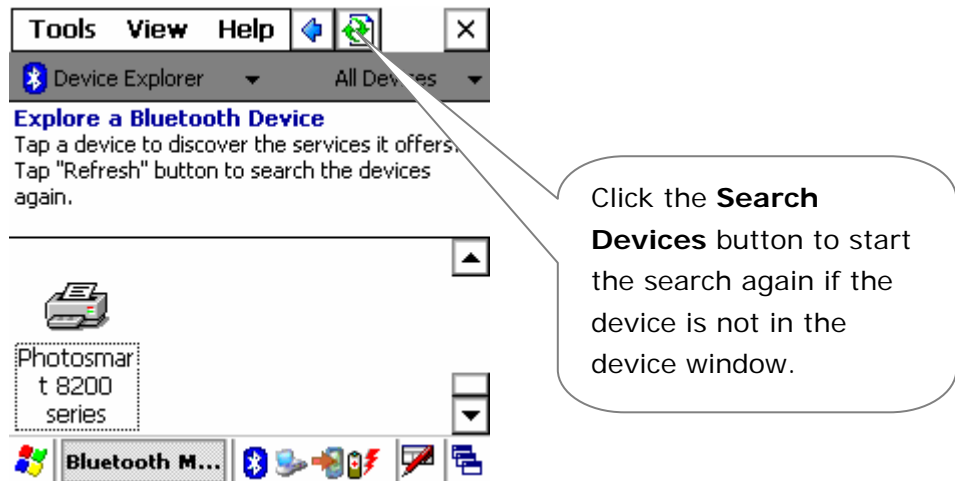


Figure 6.1 Browse Devices

Step 2: Browse Services.

Click the device which you want to establish a SPP connection, and then choose "Browse service" to browse its available services. (Figure 6.2)



Figure 6.2 Browse Services

The application may ask you to exchange a passkey if the devices have not already been paired. Input the correct passkey by key pad and press **OK** to continue the connection. (Figure 6.3)



Figure 6.3 Input Passkeys

Once the service search is complete, the found service will be listed in service browse window. Press “**F**” + “***F1**” to refresh/stop refresh list view, or go back to previous window by press “**F**” + “**ABC F2 2**”. You can also Press “**F**” + “**GHJ F4 4**” to hide every window of BlueSoleil. Or select an item then press “**ENT**” to operate a service. (Figure 6.4)

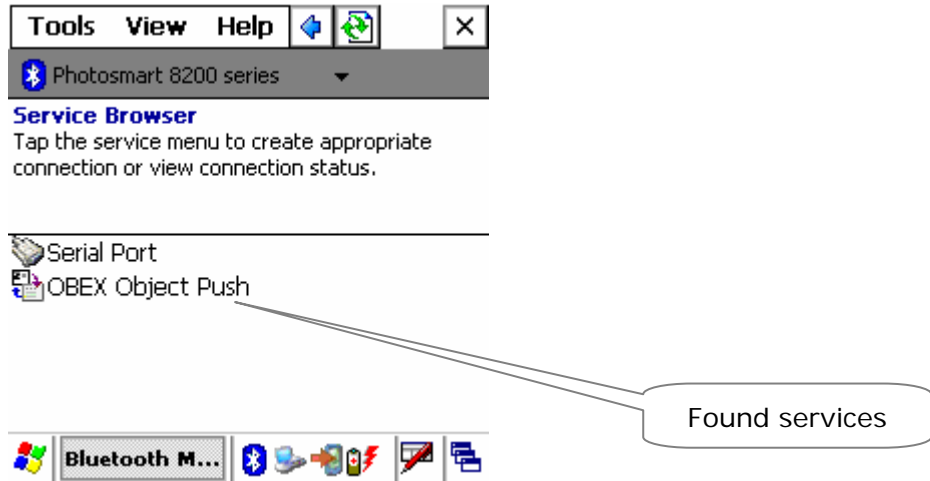


Figure 6.4 Found Services

Step 3: Connect to SPP server.
 Click the SPP service icon then choose "Connect" to connect to the SPP server. (Figure 6.5)

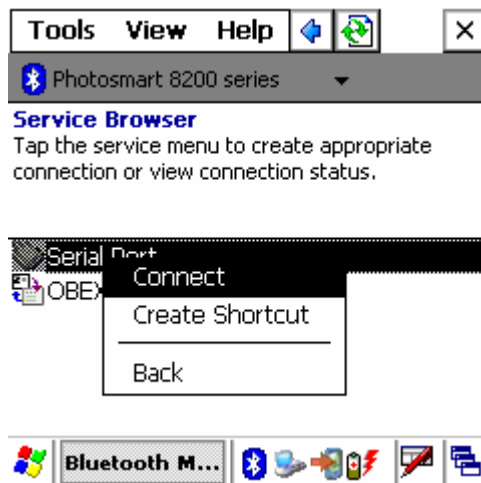


Figure 6.5 Connect to SPP

Once the connection is successfully established, a SPP shortcut appears in the Shortcut window. (Figure 6.6)

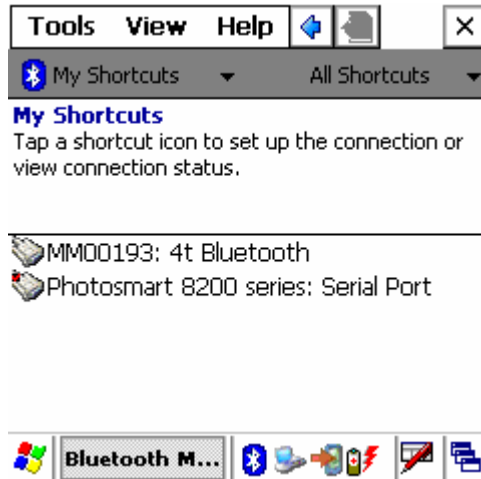


Figure 6.6 SPP Connection

Step 4: Application

Now you can use the SPP connection. For example:

1. You can print data via SPP profile by using the printer manufacture's UI.
2. You can create a Bluetooth ActiveSync connection with PC (server) based on this SPP connection. On the PC side, first create an ActiveSync partnership using a serial or USB connection. Then select the COM port server uses.

6.1.2 Disconnect the SPP Application

We provide two methods for the SPP application to disconnect SPP connection.

You can disconnect the connection in two ways.

Method 1: Click the SPP shortcut, and click **Disconnect** on the pop-up menu. (Figure 6.7)

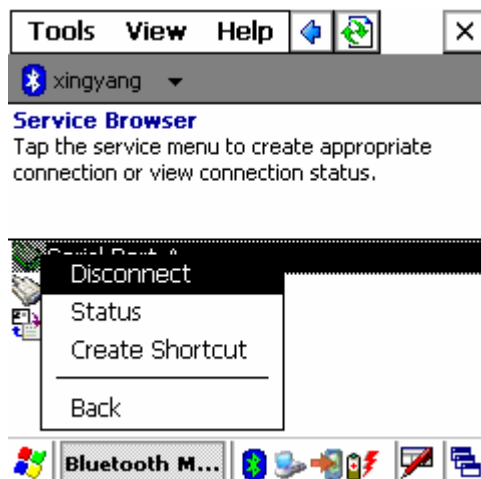


Figure 6.7 Disconnect from the Pop-up Menu

Method 2: In the Active connection window, select the SPP outgoing

connection and click the **Disconnect** button. You can press “**F1**” button to select the first list view, or press “**F2**” button to select the second list one, and then use “**ENT**” button to call the popup menu. Press “**F**” + “**F4**” to quit this window. (Figure 6.8)



Figure 6.8 Disconnect from the Status Window

6.1.3 Use the SPP Shortcut

Once a new connection is successfully established, a shortcut for the connection is generated. Double click the particular shortcut icon (represented by the Connection Name) and click **connect** on the pop-up menu to re-establish the connection.

6.2 Object Push Profile

The Object Push (OPP) application model can be seen as a client/ server structure. BlueSoleil™ for WinCE can act as both the OPP client and the OPP server.

6.2.1 Set up a new OPP Connection

BlueSoleil™ for WinCE as an OPP Client

Step 1: Browse devices.

In Device Explore window, you can press “**F**” + “**F1**” to refresh/stop list view, or go back to previous window by press “**F**” + “**F2**”. You can also Press “**F**” + “**F4**” to hide every window of BlueSoleil. After you select an item, press “**ENT**”

Click the **Search Devices** button to search for the device nearby, double click the device with which you want to establish the OPP connection.

Note: In the remote devices list, if the device with which you want to connect is

not shown in the remote devices list, please check that whether the device is power on, the distance between your device and remote device is less than 10 meters and the Bluetooth program is running on the device, then click the **Search Devices** button to search for devices nearby again.

If the device still is not shown in the device list, please check that whether the device connect to other devices. If the connection with other device(s) exists, first disconnect the connections with other device(s), and then click the **Search Devices** button to search for devices nearby again.

If the device's name is "Unknown", please check that whether the device connect to other devices. If the connection with other device(s) exists, first disconnect the connections with other device(s), and then click the **Search Devices** button to search for devices nearby again. Occasionally, you cannot get the remote device's name though you have done searching for the device many times, you can ignore it, and go on the following steps to use OPP service. (Figure 6.9)

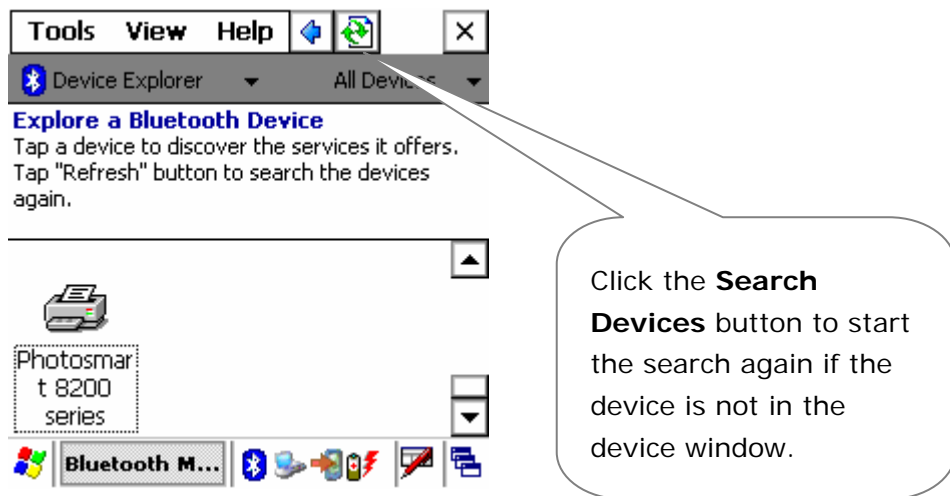


Figure 6.9 Browse Devices

Step 2: Browse services.

Click the device with which you want to establish an OPP connection then press "browse service" to browse its available services. (Figure 6.10)

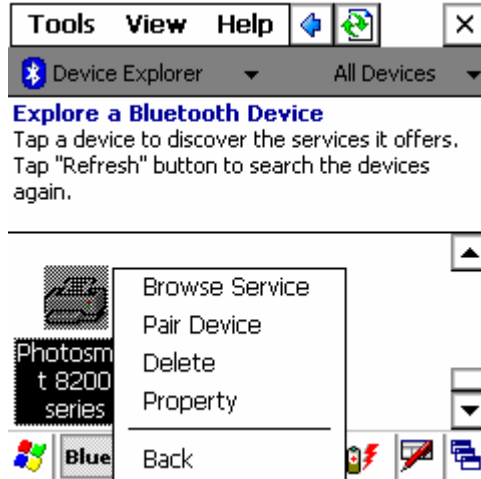


Figure 6.10 Browse Services

The application may ask you to exchange a passkey if the devices have not already been paired. Input the correct passkey and press **OK** to continue the connection. (Figure 6.11)



Figure 6.11 Input Passkeys

Once the service search is complete, the found service will be list in the window. Press “**F**” + “***F1**” to refresh/stop refresh list view, or go back to previous window by press “**F**” + “**ABC F2 2**”. You can also Press “**F**” + “**GHI F4 4**” to hide every window of BlueSoleil. Or select an item then press “**ENT**” to operate a service. (Figure 6.12)

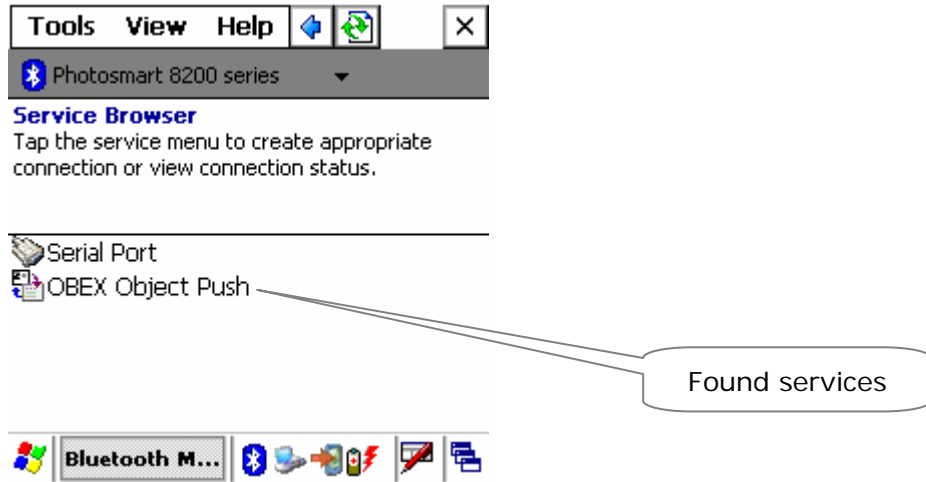


Figure 6.12 Found Services

Step 4: Application

In the OPP Operation Window,

Click the **Send default file** item to send the default file which has set in the OPP configuration window.

Click the **Choose and send** item to send a specific file, this will also change the default file path in OPP configuration window.

Click the **Create shortcut** item to create an OPP shortcut in the Shortcut window. (Figure 6.13)

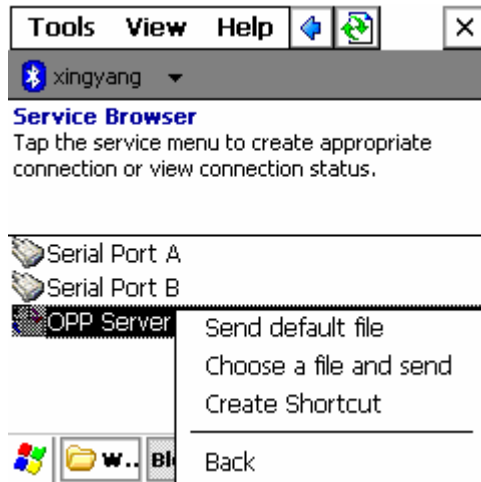


Figure 6.13 Connect to OPP Server

Once you create an OPP shortcut, it appears in the Shortcut window and the OPP operation window appears. (Figure 6.14)



Figure 6.14 OPP Operation Window

6.2.2 Use the OPP Shortcut

Once a new connection is successfully established, a shortcut for the connection is generated. Double click the particular shortcut icon (represented by the Connection Name) and click **Send default file** or **choose a file and send** on the pop-up menu to send the right file.

7 Print file via the Bluetooth

The following section outlines how to print file via the Bluetooth provided by BlueSoleil™.

Step 1: Browse devices.

In Device Explore window, you can press “**F**” + “***F1**” to refresh/stop list view, or go back to previous window by press “**F**” + “**ABC F2**”. You can also Press “**F**” + “**GHI F4**” to hide every window of BlueSoleil. After you select an item, press “**ENT**”

Click the **Print Device via Bluetooth** button to search for the device nearby, double click the device with which you want to establish the SPP connection.

Note: In the remote devices list, if the device with which you want to connect is not shown in the remote devices list, please check that whether the device is power on, the distance between your device and remote device is less than 10 meters and the Bluetooth program is running on the device, then click the **Search Devices** button to search for devices nearby again.

If the device still is not shown in the device list, please check that whether the device connect to other devices. If the connection with other device(s) exists, first disconnect the connections with other device(s), and then click the **Search Devices** button to search for devices nearby again. (Figure 6.1)

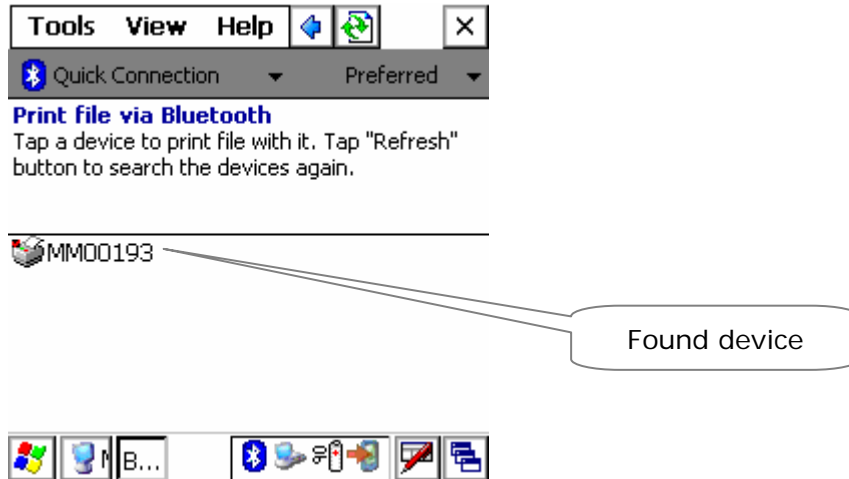


Figure 7.1 Print file via Bluetooth Operation Window

The application may ask you to exchange a passkey if the devices have not already been paired. Input the correct passkey and press **OK** to continue the connection. (Figure 7.2)



Figure 7.2 Input Passkeys

Step 2: Application

In the Print file via Bluetooth Operation Window,

Click the **Send default file** item to send the default file which has set in the OPP configuration window.

Click the **Choose and send** item to send a specific file, this will also change the default file path in OPP configuration window. (Figure 6.12)

Note: We recommend you to use printer manufacture's UI to print data in case the above 2 ways are not working.

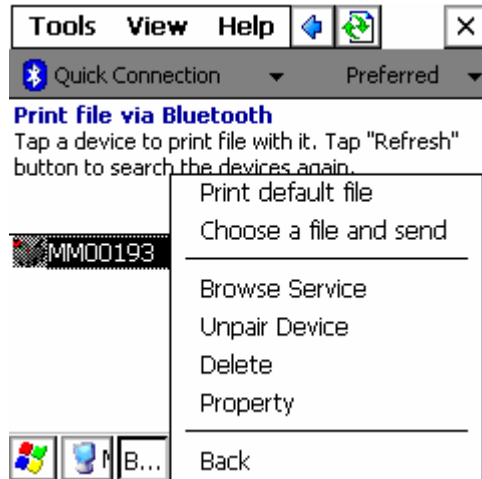


Figure 7.3 Print file via Bluetooth Operation Window