

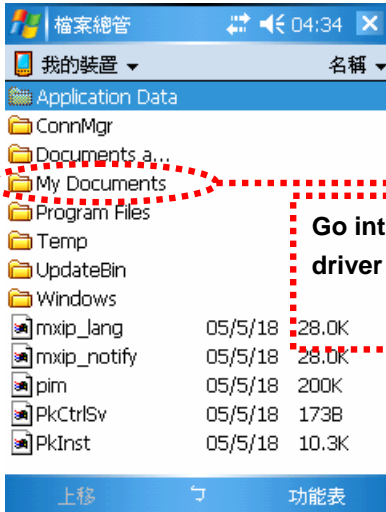
Open "start" menu



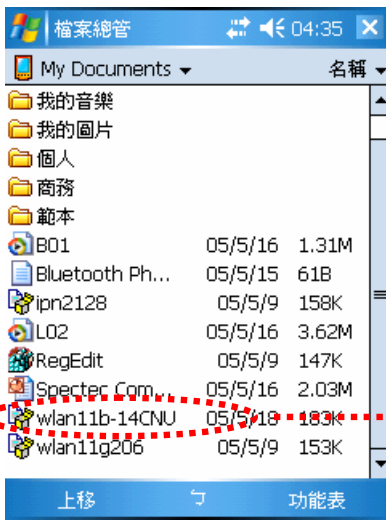
Enter "file explorer"



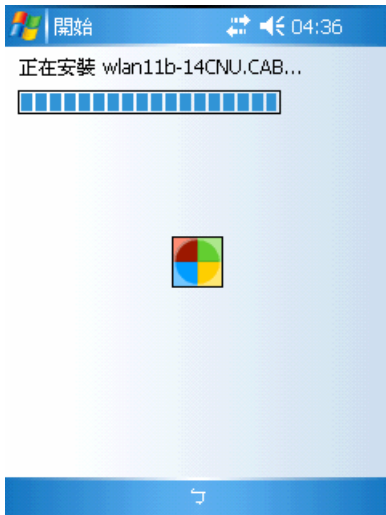
Enter "file explorer"



Go into the directory where you store that .cab driver file



Run that .cab driver file by tapping that .cab driver file in handheld



After completing the installation of driver, there prompt a message to notify you that you can remove that .cab file to save the space



This icon tell you that handheld have activated WLAN card

Select the AP that you want to connect



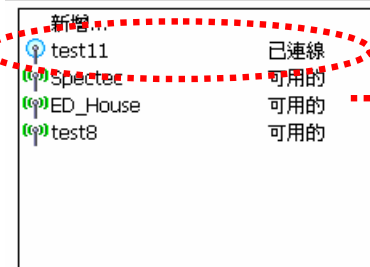
Start to connect AP



Select "setting" menu



Select wireless lan card



You can see the available AP here

