

Quick Guide

Quick Start . . .

■ 1. Install the software

< Connect PDA to your computer with a USB wire.



< Insert the Installation CD or manual to run **AutoRun.exe**, the Main Menu window will pop-up on your screen, clicking **want to install item**.

■ 2. Insert the Card

< After insert the card into a PDA, Network Detected window appears (if any.)



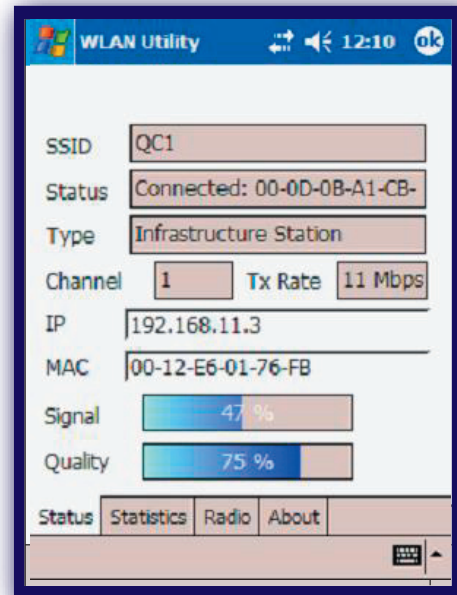
* Note: Please do not keep inserting & removing the card, different PDAs needs an interval of 5 to 7 seconds to process.



3. Connections Information

< Shows SSID, IP Address, Mac Address, Signal Strength, and Signal Quality information.

*** Note : The WLAN Utility can only be compatibility on PPC 2003 (CE 4.X) and few windows mobile 5.0(CE5.0) OS.**



4. Enjoy your surfing of Internet or Other Service



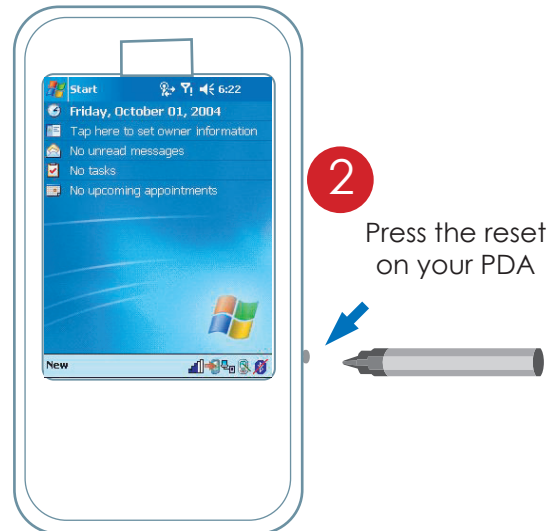
Upgrade (Re-install) the Software

1. Remove the card from device

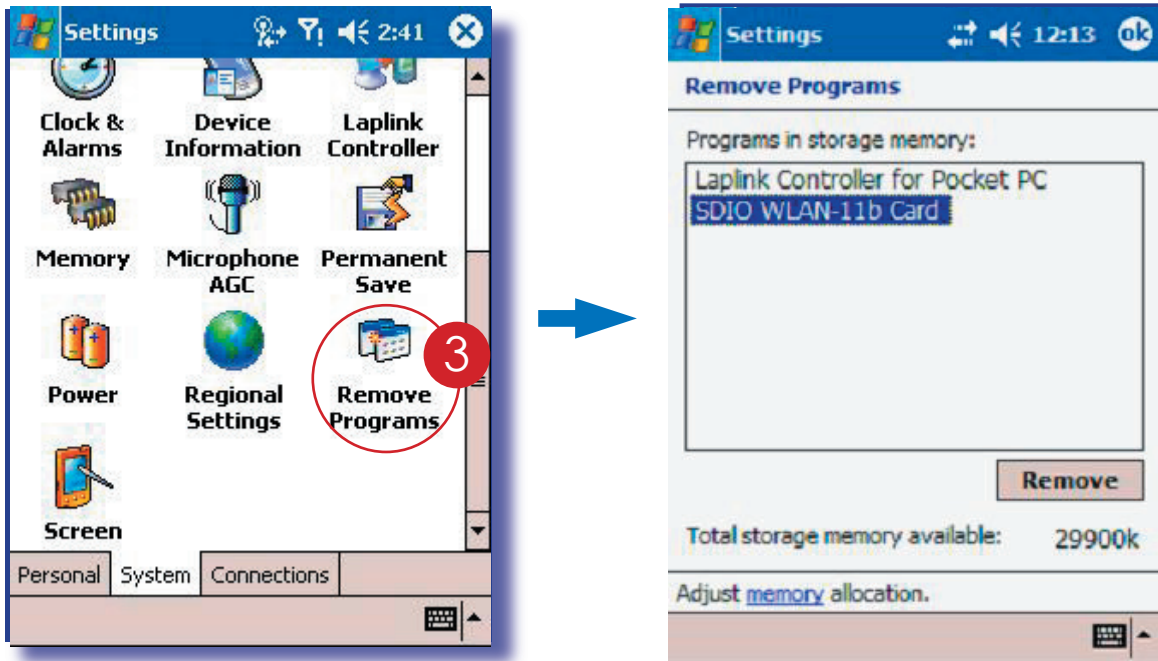




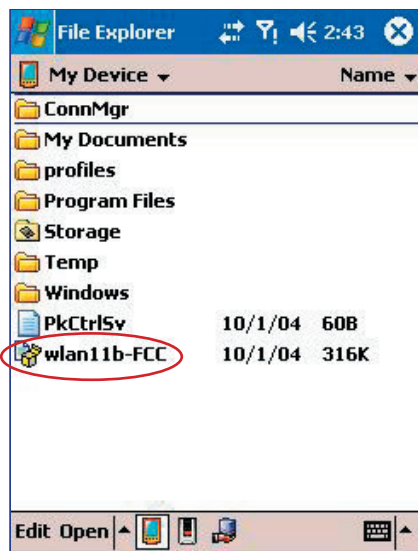
2. Software reset the device



3. Remove the previous version from your device \ Remove Programs



4. Copy the updated driver .cab file to your device, and click it to install



For more details, please refer User's Manual.